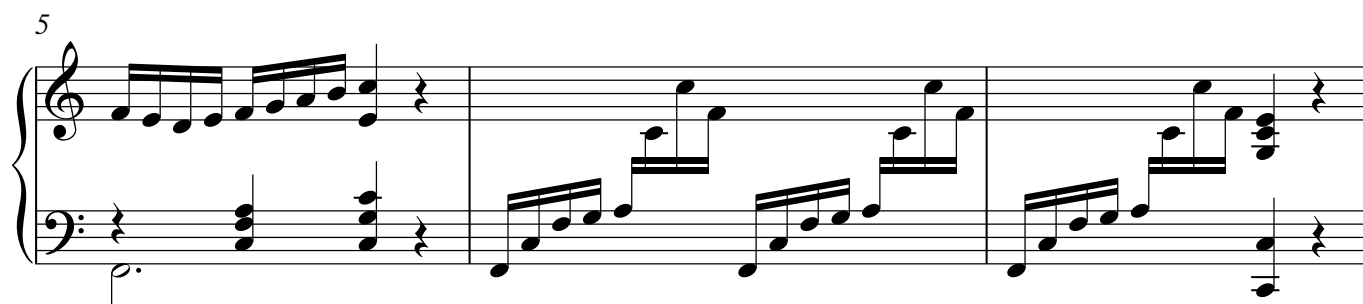
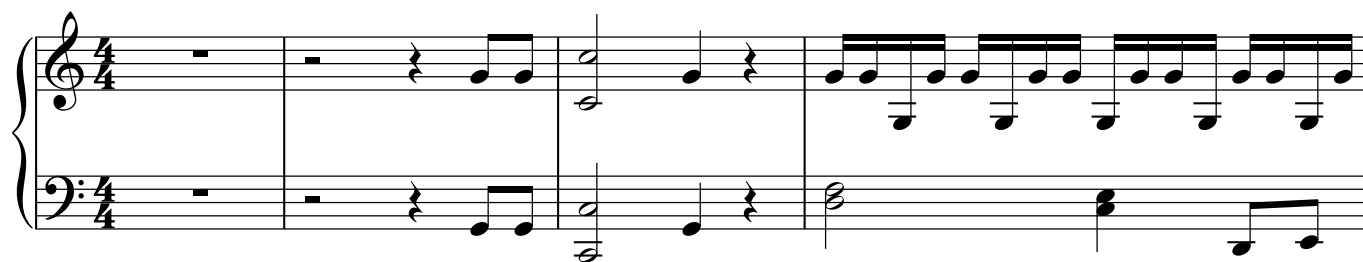


Piano

МИ ВІТАЄМО ВАС



20

Measures 20-22 of a piano piece. Measure 20 features a treble staff with eighth-note runs and a bass staff with a steady eighth-note accompaniment. Measures 21 and 22 continue the melodic and harmonic development with various chordal textures.

23

Measures 23-24. Measure 23 shows a more active treble staff with sixteenth-note passages, while the bass staff maintains a consistent eighth-note pattern. Measure 24 concludes the system with sustained chords in both staves.

25

Measures 25-29. Measure 25 introduces a key signature change with two sharps (F# and C#). Measures 26-28 are characterized by dense, complex chordal structures in the treble, with the bass providing a more fluid accompaniment. Measure 29 ends with a final chordal texture.

30

Meno mosso

Measures 30-34. Measure 30 begins the 'Meno mosso' section with a repeat sign. Measures 31-33 feature a series of chords in the treble and a more active bass line. Measure 34 concludes the system with a final chordal texture.

35

Measures 35-39. Measure 35 starts with a treble staff featuring a melodic line and a bass staff with a steady accompaniment. Measures 36-38 continue the melodic and harmonic development. Measure 39 ends with a final chordal texture.

40

Measures 40-43. Measure 40 features a treble staff with a melodic line and a bass staff with a steady accompaniment. Measures 41-42 continue the melodic and harmonic development. Measure 43 concludes the system with a final chordal texture.

43

First ending (1.)

Second ending (2.)

This system contains measures 43 through 46. Measure 43 begins with a treble clef and a key signature of one sharp (F#). The right hand features a complex, rapid sixteenth-note melody, while the left hand provides a steady accompaniment of eighth notes. A first ending bracket spans measures 44 and 45, leading to a second ending bracket for measures 46 and 47. The second ending concludes with a double bar line.

47

This system contains measures 47 through 51. The right hand continues with a melodic line, incorporating some rests and ties. The left hand maintains a consistent eighth-note accompaniment. The system ends with a double bar line.

52

This system contains measures 52 through 56. The right hand's melody becomes more rhythmic, with frequent eighth-note patterns. The left hand's accompaniment remains steady. The system concludes with a double bar line.

57

This system contains measures 57 through 61. The right hand features a more active melodic line with some sixteenth-note passages. The left hand continues with the eighth-note accompaniment. The system ends with a double bar line.